

Harvard MTA Universal OptiCaps®

Endodontic repair cement in capsules based on MTA

- Highly biocompatible material
- Excellent bond to dentin
- Radiopaque
- Firm and homogenous consistency directly from the capsule
- Forms tertiary dentin
- Setting not affected by humidity
- Suitable for pulp capping, sealing root perforations, root end fillings (orthograde or retrograde)
- Mixing time: 30 sec.
- Working time: 2:00 min. (from start of mixing at 23 °C (73 °F))
- Next clinical step: 5:00 min.

Set also in humid conditions



1. P.D.

Harvard MTA Universal HandMix

Endodontic repair cement based on MTA, as HandMix

Endodontinis cementas MTA pagrindu

- Biocompatible material
- Excellent bond to dentin
- Radiopaque
- Forms tertiary dentin
- Setting not affected by humidity
- Suitable for pulp capping, sealing root perforations, root end fillings (orthograde or retrograde)
- Very easy to mix

Set also in humid conditions

Biologiškai suderinama medžiaga
Puikus sukibimas su dentinu
Stingimas nepaveikiamas drėgmės
Tinkamas pulpos padengimui, šaknų perforacijų sandarinimui,
šaknų galiukų užpildymui



Due to MTA, good long term prognosis.

**>> Harvard
MTA Universal
OptiCaps®. This
product should not
be missing in any
practice. <<**

Mineralinio trioksido agregato pagrindu

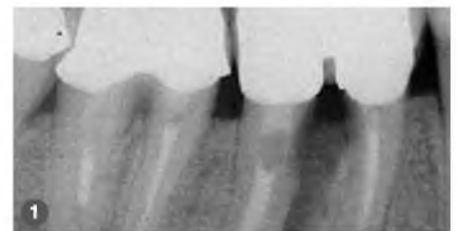
Mineral Trioxide Aggregate (MTA) should not be missing in any practice, it is the ideal product for the direct pulp capping. Compared to calcium hydroxide preparations, MTA does not form a necrosis zone, but stimulates the dentin to form a covering layer over the cement. The pulp remains vital and the patient remains symptom-free. Due to its biocompatibility, there is no inflammatory reaction of the bone if a perforation site in the apical region or a filled apex is lightly plugged with MTA cement. A slight expansion of the cement leads to a

secure sealing of the indication site. Simple and precise application with optimum consistency is provided by the Harvard MTA Universal OptiCaps®. **Valuable treatment time is saved, and I am very satisfied with the good treatment results.**



Oxana Hilfer, Dentist Hamburg, Germany

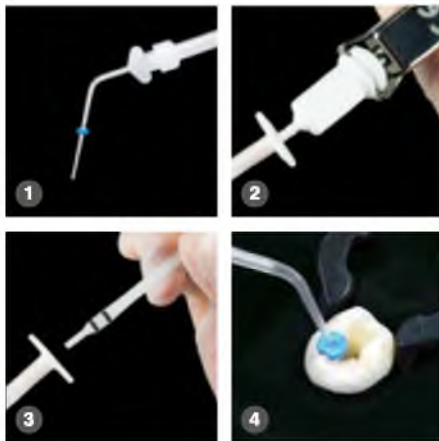
- 1.: **Initial situation:** Damaged root canal wall and demineralized bone.
- 2.: **After treatment:** Root canal perforation sealed with Harvard MTA Universal.
- 3.: **After one year:** Perfect seal of the application areas. New remineralized bone and better retention of the tooth.



Optional:

The **EndoDirect** Syringe for perfect application.

- 1.: Angled needle tip with individual working length
- 2.: Filling the EndoDirect syringe
- 3.: Insertion of the plunger into the EndoDirect syringe
- 4.: Application of the material into the root canal



„Click before you mix!“

Instruction for the activating and mixing from Harvard OptiCaps®

Remove capsule (OptiCaps®) from the pouch

- 1.: OptiCaps® before activation.
- 2.: For activation of the OptiCaps® press the plunger on a hard and plain surface to the end into the OptiCaps®.
- 3.: Insert the OptiCaps® into the Harvard Applier OptiCaps® and click once to standardize.

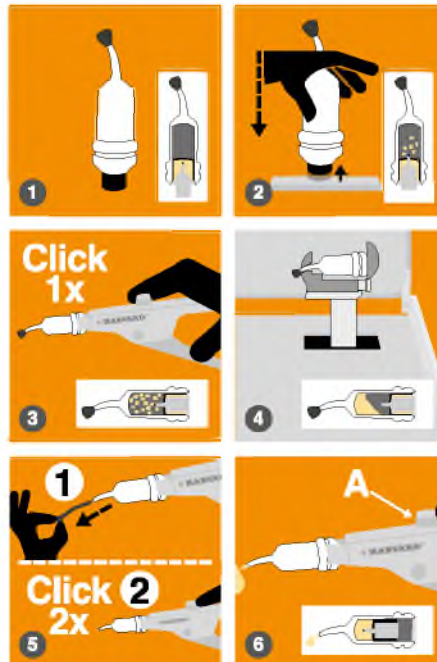
Note: The plunger must be at the same level as the bottom of the capsule.

- 4.: Insert the OptiCaps® into a mixer, close lid and mix immediately for the period mentioned in the instructions for use (with about 4300 oscillations / min).
- 5.: Insert the OptiCaps® into the Harvard Applier OptiCaps®. Remove the pin from the nozzle. If not, capsule can burst.

Pull the lever twice (2 clicks) to prime the OptiCaps®.

- 6.: Extrude the mixed material on a glass plate or apply directly. Unlock the gun (push button A) and remove the OptiCaps®.

Only with the Harvard Applier OptiCaps® (Order-No. 7092000) the optimal amount of mixed material is guaranteed.



For the selection of a suitable capsule mixer, our sales and marketing colleagues are gladly available to you.

Mixing & working times of various Harvard OptiCaps® products.

Mixing time	Working time*	Next clinical step
Harvard MTA-CAP (MTA XR Flow Fast)		
30 Sek.	2:00 Min.	3:00 Min.
Harvard MTA-PT		
30 Sek.	2:00 Min.	3:00 Min.
Harvard MTA-Repair (MTA XR)		
30 Sek.	2:00 Min.	5:00 Min.
Harvard MTA-Ortho (MTA XR Flow EWT)		
30 Sek.	4:00 Min.	10:00 Min.
Harvard MTA-Retro (MTA XR Fast)		
30 Sek.	2:00 Min.	3:00 Min.
Harvard MTA-RootSeal		
30 Sek.	>10:00 Min.	60:00 Min.
Harvard MTA Universal OptiCaps®		
30 Sek.	2:00 Min.	5:00 Min.

* from the start of mixing at 23 °C (73 °F)

Order information:

Harvard MTA-CAP	
2 OptiCaps® ea. 0.25 g, ea. packed in an aluminum pouch	7081503

Harvard MTA-PT	
2 OptiCaps® ea. 0.25 g, ea. packed in an aluminum pouch	7081512

Harvard MTA-Repair	
2 OptiCaps® ea. 0.25 g, ea. packed in an aluminum pouch	7081505

Harvard MTA-Ortho plus EndoDirect	
2 OptiCaps® ea. 0.25 g, ea. packed in an aluminum pouch, 2 MTA EndoDirect syringes with flexible endo-tip	7081510

Harvard MTA-Retro	
2 OptiCaps® ea. 0.25 g, ea. packed in an aluminum pouch	7081506

Harvard MTA-RootSeal	
2 OptiCaps® ea. 0.25 g, ea. packed in an aluminum pouch, 2 MTA EndoDirect syringes with flexible endo-tip	7081511
2 OptiCaps® ea. 0.25 g, ea. packed in an aluminum pouch	7081513

Harvard MTA Universal OptiCaps®	
2 OptiCaps® ea. 0.25 g, ea. packed in an aluminum pouch	7081502

Harvard Applier OptiCaps®	7092000
----------------------------------	---------

pakuotė: 1g miltelių, 3ml skysčio, dozavimo šaukštelis, maišymo padelis, mentelė

Harvard MTA Universal HandMix	
1 g powder, 3 ml liquid, dosage spoon, mixing pad, spatula	7081507
2 g powder, 4 ml liquid, dosage spoon, mixing pad, spatula	7081508

Harvard Distribution Partner.

11063_EN_06/23



HARVARD®

Marke und Qualität seit 1892

Harvard Dental International GmbH

Margaretenstr. 2 - 4, 15366 Hoppegarten, Germany

Phone: + 49 (0) 30/99 28 978-0

Fax: + 49 (0) 30/99 28 978-19

info@harvard-dental-international.de



monetą elektroniniu parašu

pasirašė

Data: 2025-03-06 09:55:12

Paskirtis: Pirkimo

Vieta: E. J. J. g. 8, Kaunas

aktinė informacija: Vietoj

pirkimų specialistė